

Loctite® Nordbak® Sprayable Ceramic

Loctite® Nordbak®

Sprayable Ceramic is

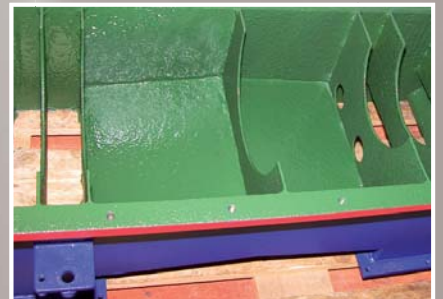
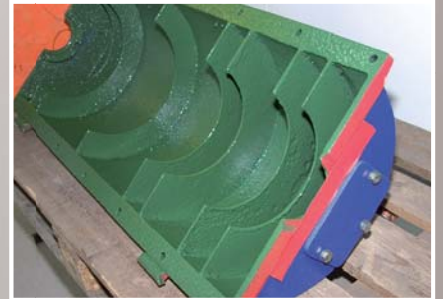
a two-component sprayable epoxy product that creates a smooth, low-friction coating combating turbulence and cavitation on components such as pump housings and impellers, improving equipment efficiency. Designed to protect and extend the service life of a wide range of plant equipment, Nordbak® Sprayable Ceramic provides excellent wear resistance and superior adhesion.

Typical Applications:

- Wear and chemical protection coating on larger surfaces such as tank linings, mixing vessels, pump housings and centrifuge components, both internal and external.
- Corrosion protection on plant equipment
- Corrosion protection on smaller or more intricate areas that are difficult to reach with a brush

Benefits:

- Sprayable product is quickly, easily and evenly applied to large parts and complex surfaces
- Excellent chemical resistance
- Thixotropic formula allows for overhead applications
- Good adhesion to metal surfaces
- Solvent-free
- Ready-to-use cartridge package – no mixing or equipment cleaning



KRAYDEN, INC.
AUTHORIZED DISTRIBUTOR
1-800-448-0406





KRAYDEN, INC.
 AUTHORIZED DISTRIBUTOR
 1-800-448-0406




How to Apply

To achieve best results, Loctite® Nordbak® Sprayable Ceramic should be applied to a grit-blasted surface, cleaned to SA 2.5 with a surface roughness of 0.075 mm to 0.1 mm. The best surface finish is achieved by preheating a cartridge to between 104°F and 122°F. This can be easily achieved with the Loctite® cartridge preheater.

Convenient Dual Cartridge

Use as little or as much as needed with the 900 ml dual cartridge, two-component epoxy, which is pre-measured to dispense at the proper 2:1 mix ratio. Cartridge comes packaged with two static mix nozzles to ensure easy and thorough mixing.

Surface coverage: One 900 ml cartridge covers 20 ft.² at 20 mil thickness. Easy to use with dedicated pneumatic dispensing gun.

Product	IDH No.	Package Size	Description
 Loctite® Nordbak® Sprayable Ceramic	1389509	900 ml	Covers 20 ft ² at 20 mil thickness. Kit contains two static mixers /nozzles.
 Pneumatic Handgun	1175530	1 piece	Dual Cartridge Handgun; 2:1 ratio. Spray adapter with pressure regulator, gauge, air hose
 Preheating Box	796993	1 piece	Preheating system for 900 ml cartridge
Spare Parts			
 Static Nozzle	1248606	10 pieces	Mix nozzle 6.4 mm/24 elements include orifice restrictor OR4
 Regulator	1175529	1 piece	Regulator for atomizing air

Henkel Corporation
Engineering Adhesives
www.henkelna.com/mro
www.loctite.com

U.S.A.
Henkel Corporation
 Engineering Adhesives
 One Henkel Way
 Rocky Hill, Connecticut 06067
 Tel: 1.800.LOCTITE (562.8483)
 Tel: 860.571.5100
 Fax: 860.571.5465

Canada
Henkel Canada Corporation
 Engineering Adhesives
 2225 Meadowpine Blvd.
 Mississauga, Ontario L5N 7P2
 Tel: 1.800.263.5043 (within Canada)
 Tel: 905.814.6511
 Fax: 905.814.5391

Except as otherwise noted, all marks used are trademarks and/or registered trademarks of Henkel and/or its affiliates in the U.S. and elsewhere. © = registered in the U.S. Patent and Trademark Office. © Henkel Corporation, 2010. All rights reserved. 6235/LT-5791 (6/10)